

Summer 2016 - CSC Workshop

Darrell Frank
Municipal Forester

Why North Cowichan?

- Located between Victoria and Nanaimo on Vancouver Island, with easy access by plane and ferry;
- Variety of venues for social and networking events; and
- Access to North Cowichan's Municipal Forest for field visits and training.



Around the Cowichan Valley

Averill Creek Vineyard



Photo credit: <http://www.averillcreek.ca/photo-video-gallery/>

Merridale Ciderworks



Photo credit: Merridale Ciderworks



Cowichan Bay



Photo credit: Multiple

Kinsol Trestle



Photo credit: Cowichan Station Area Association

BC Forest Discovery Centre

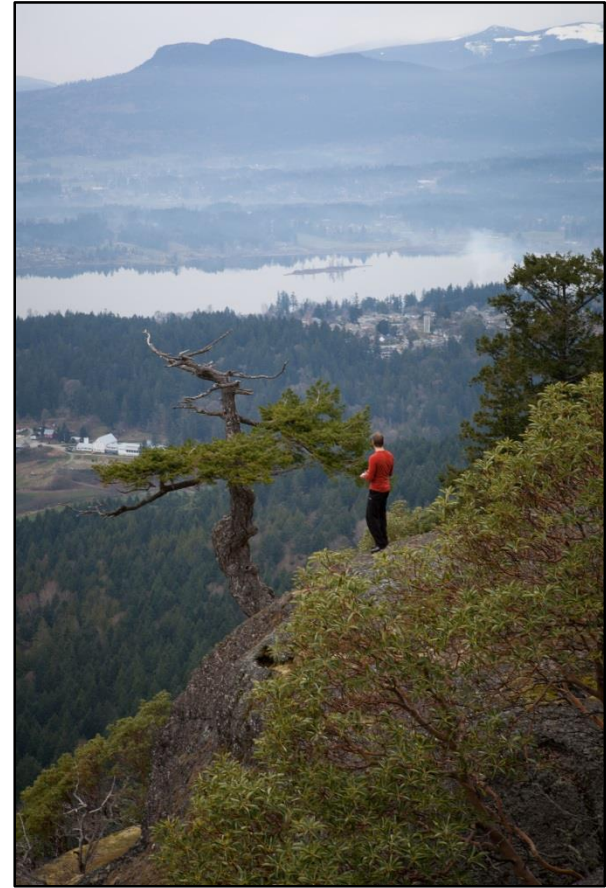
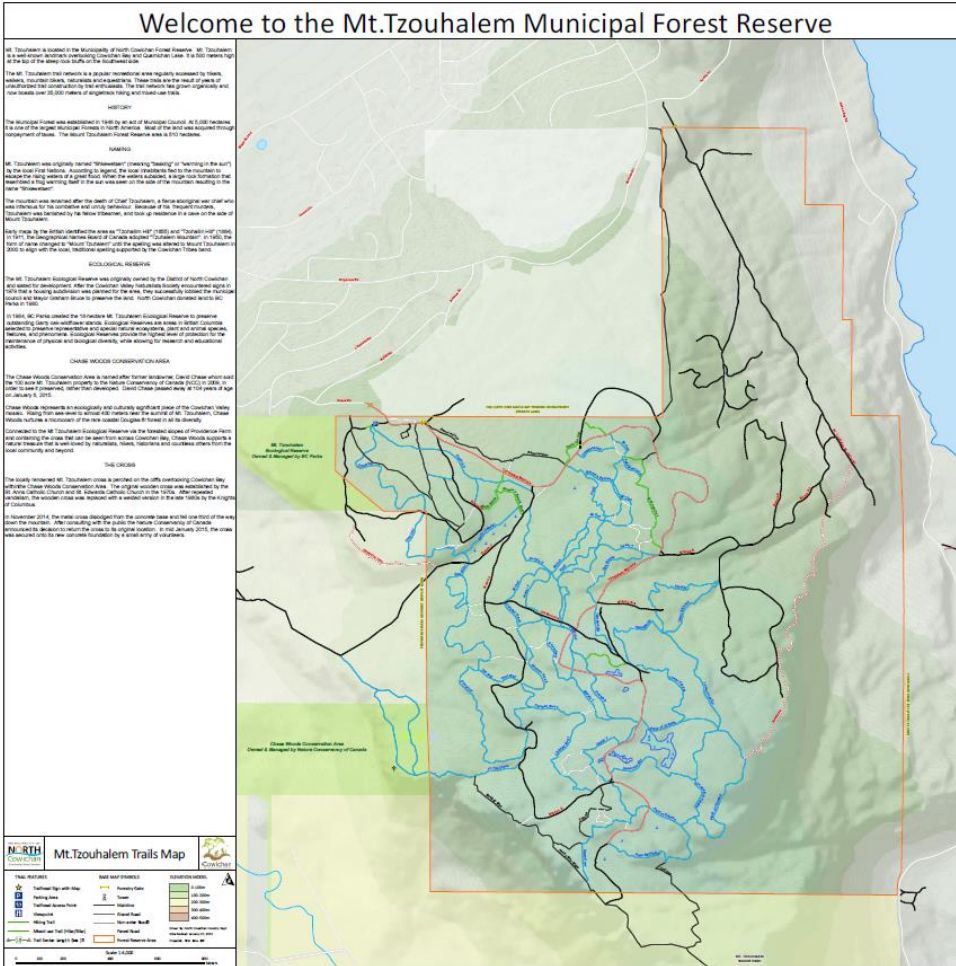


Photo credit: Multiple

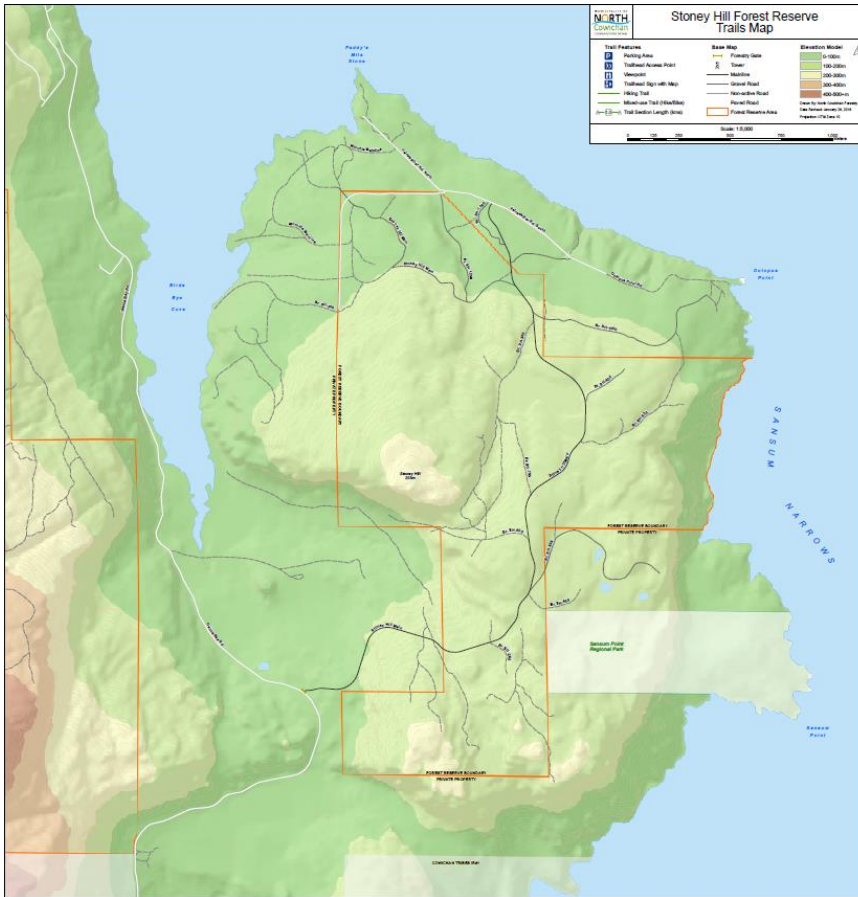


Select Municipal Forest Land Holdings

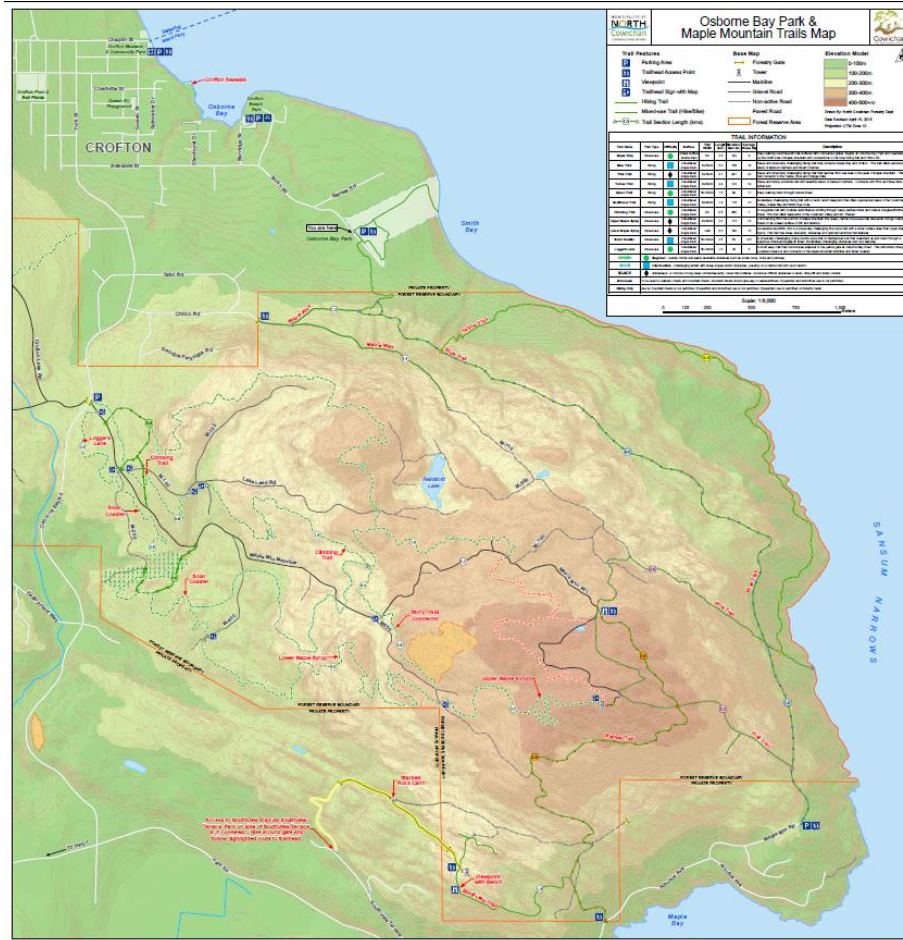
Mt. Tzouhalem



Stoney Hill



Maple Mountain





WE HOPE TO WELCOME
YOU HERE!
